

**LETTER OF TRANSMITTAL**

TO: Global Infrastructure, Inc.  
Excellere Construction, LLC  
Talley Construction  
Hasbun Construction  
Integrated Builds

[info@globalinf.co](mailto:info@globalinf.co)  
[luigih@excellere-ga.com](mailto:luigih@excellere-ga.com)  
[tfountain@talleyconstruction.net](mailto:tfountain@talleyconstruction.net)  
[jhasbun@hasbunconstruction.com](mailto:jhasbun@hasbunconstruction.com)  
[sstewart@integratedbuilds.com](mailto:sstewart@integratedbuilds.com)

The Blue Book  
Dodge Data & Analytics  
Builders Exchange of Tennessee  
Associated General Contractors  
ConstructConnect

[emcveigh@mail.thebluebook.com](mailto:emcveigh@mail.thebluebook.com)  
[dodge.bidding@construction.com](mailto:dodge.bidding@construction.com)  
[heather@bxtn.org](mailto:heather@bxtn.org)  
[planroom@agcetn.org](mailto:planroom@agcetn.org)  
[rachael.taylor@constructconnect.com](mailto:rachael.taylor@constructconnect.com)

FROM: Wil Jackson, P.E.

DATE: February 5, 2025

PROJ. NO.: G23012-01

SUBJECT: Addendum No. 1  
Trust for Public Land  
Battlefield Connector Multi-Use Trail

PAGES: 9 pages to follow

<b>PLEASE RESPOND</b> → → → →	<b>TO CONFIRM RECEIPT OF THIS ADDENDUM NO. 1 PLEASE SIGN AND EMAIL TO CTI <a href="mailto:vvisco@ctiengr.com">vvisco@ctiengr.com</a></b>
	Company _____
	Signature _____
	Title _____
Date _____	

ID 844155

## ADDENDUM NO. 1

### BATTLEFIELD CONNECTOR MULTI-USE TRAIL

#### TRUST FOR PUBLIC LAND CTI PROJECT NO. G23012-01

The following changes shall be made to the Contract Documents, Specifications, and Drawings:

#### I. CONTRACT DOCUMENTS

##### A. **Section 00 11 00, Advertisement for Bids.**

1. DELETE Page 00 11 00-1 and REPLACE with the attached, 00 11 00-1.1. The new date for the bid opening is Wednesday, March 5, 2025, at 12 PM at Walker County Commissioner's Office, 101 S. Duke Street, LaFayette, GA 30728.

##### B. **Section 00 21 00, Information for Bidder.**

1. Page 00 21 00-1, In Section 2, third paragraph, line 2. DELETE the words "P.O. Box 3240, Chattanooga, TN 37404", and SUBSTITUTE therefore the words, "1810 E. Main St, Ste. 200, Chattanooga, TN 37404-5040".
2. Page 00 21 00-3, In Section 11, second paragraph, line 7. DELETE the words "by facsimile", and SUBSTITUTE therefore the words, "electronically".

##### C. **Section 00 42 00, Bid Schedule for Unit Price.**

2. DELETE Pages 00 42 00-1 thru 00 42 00-5 and REPLACE with the attached Pages, 00 42 00-1.1 thru 00 42 00-6.1.

##### D. **Section 00 64 00, Federal Contract Conditions.**

1. Page 00 64 00-10, In Section 4. DELETE the phrase "(insert description of the economic area in which the contract will be performed, giving the city, SMSA or non SMSA designation, and a list of the counties included in the economic)", and SUBSTITUTE therefore the words, "the City of Chickamauga within Walker County, Georgia".

##### E. **Section 00 73 00, Supplemental General Conditions.**

1. Page 00 73 00-11. DELETE Paragraph 26.1 and SUBSTITUTE therefore the words, "(RESERVED)".

#### II. SPECIFICATIONS

##### A. **Section 01 11 00 Summary of Work.**

1. Page 01 11 00-1, Part 1, Section 1.1 A, Line 3. INSERT the word "Trail" after the word "Multi-use".
2. Page 01 11 00-1 Part 1, Section 1.2 A (1.). DELETE the words "Walker County", and SUBSTITUTE therefore the words, "Trust for Public Land".

#### III. DRAWINGS

- ##### A. DELETE Drawing C-401, Standard Details and REPLACE with the attached Drawing, C-401.01.
- a. Add "Typical Type I Hand Rail" Detail.

The following contractor minimum insurance requirements from the contract owner, Trust for Public Land, are being provided:

I. INSURANCE REQUIREMENTS

A. Trust for Public Land Minimum Requirements

- a. **Commercial General Liability (CGL):** Covering CGL on an “occurrence” basis, including products and completed operations, property damage, bodily injury, and personal and advertising injury with limits no less than \$2,000,000 Aggregate / \$1,000,000 per Occurrence.
- b. **Automobile Liability:** Covering any auto, or if Contractor has no owned autos, hired, and non-owned autos, with limit no less than \$1,000,000 per accident for bodily injury and property damage.
- c. **Workers’ Compensation:** As Required by the applicable, with Statutory Limits, and Employer’s Liability Insurance with limits of no less than \$1,000,000 per accident for bodily injury or disease. Such insurance shall contain a Waiver of Subrogation.
- d. **Professional Liability (Errors and Omissions):** Insurance appropriate to the Contractor’s profession, with limit no less than \$1,000,000 per occurrence or claim, \$2,000,000 aggregate. Must be in-force continuously for five years following completion of services.
- e. **Umbrella:** \$1,000,000 Aggregate / \$1,000,000 per Occurrence. All contracts should contain language stating that Trust for Public Land is not responsible for damage to the contractor’s property.

B. Insurance Policy Provisions

- a. **Additional Insured Status on General Liability and Umbrella:** The Entity, its officers, officials, employees, and volunteers are to be covered as additional insureds on the CGL policy with respect to liability arising out of work or operations performed by or on behalf of the Contractor, including materials, parts, or equipment furnished in connection with such work or operations. General Liability coverage can be provided in the form of an endorsement to the Contractor’s insurance.
- b. **Primary Coverage:** Insurance shall be primary.

Date: February 5, 2025

CTI Engineers, Inc.  
/s/ Russell W Jackson, P.E.  
Assistant Project Manager

**BID SCHEDULE FOR UNIT PRICE  
BATTLEFIELD CONNECTOR MULTI-USE TRAIL  
TRUST FOR PUBLIC LAND  
WALKER COUNTY, GEORGIA**

**Note: Unless otherwise stated, all bid items shall be a complete installation as specified and/or shown on the Drawings.**

Item No.	Description	Unit	Est. No. of Units	Unit Price	Item Total
<b>SCHEDULE I - BASE BID</b>					
00 66 13	<b>Performance &amp; Payment Bonds</b> (Max 2% of Bid)	LS	1		\$
01 11 00	<b>Mobilization</b> (Maximum 2.5% of Bid) Including Locating and Excavating (pot-holing) the Existing Utilities in Coordination with WCWSA, Project Layout and Staking, and Coordination with Local Walker County Officials and the Local Schools.	LS	1		
01 22 00	<b>Traffic Control Devices for Traffic Control and Road Closure</b> to Meet MUTCD and GDOT Requirements and in Coordination with the Walker County Road Department	LS	1		
01 32 38	<b>Pre-Construction Video Taping</b> of Existing Ground Conditions along the path of the Proposed Multi-Use Trail Construction	LS	1		
<b>03 30 00</b>	<b>Cast-In-Place Concrete. All Material and Labor, Including Form Work, Reinforcing, Concrete, and Finishing</b> , Complete in Place as Specified and/or Shown on the Drawings				
03 30 00a	<b>Cast-In-Place Concrete - 3,000 PSI Class B</b> for Utility Crossings and Other Areas Not Specified or as Directed by Engineer	CY	10		
03 30 00b	<b>Cast-In-Place Concrete - 4,000 PSI Class A for 10-Foot-Wide, 6-Inch Thick Multi-Use Trail</b> , Including Excavation, Placement of 2-Inch Bedding Stone, Fine Grading, Form Work, Expansion Joints, Finish Rubbing, Detectable Warning Surface, and Site Restoration, Complete-In-Place	SF	41,600		
03 30 00c	<b>Cast-In-Place Concrete - 4,000 PSI Class A for 5-Foot-Wide, 6-Inch Thick Multi-Use Sidewalk/Trail</b> , Including Excavation, Placement of 2-Inch Bedding Stone, Fine Grading, Form Work, Expansion Joints, Finish Rubbing, Detectable Warning Surface, and Site Restoration, Complete-In-Place	SF	3,000		
03 30 00d	<b>Class A (4,000 psi) 8-inch Thick Concrete for Driveway Aprons (Per GDOT Standard A-1)</b> , Including Excavation, Bedding, Form Work, Reinforcement Steel, Concrete Mix, Pour and Finish Rubbing, Complete In Place as Shown in Detail on the Plans and as directed by the Engineer.	SF	620		

Item No.	Description	Unit	Est. No. of Units	Unit Price	Item Total
03 30 00e	<b>Class A (4,000 psi) 6-inch Thick Concrete for Driveway Repairs</b> , Including Excavation, Bedding, Reinforcement Wire, Form Work, Concrete Mix, Pour and Finish Rubbing, Complete In Place as Shown in Detail on the Plans and as directed by the Engineer.	SF	400		
03 30 00f	<b>Cast-In-Place Concrete - 4,000 PSI Class A for Concrete Header Curb (GDOT Standard 9032B, Type 2)</b> , Including Excavation, 2-Inch Bedding Stone, Form Work, Expansion Joints, Finish Rubbing, and Site Restoration, Complete-In-Place	LF	680		
03 30 00g	<b>Class A (4,000 PSI) Concrete for Curb and Gutter</b> , Including Form Work, Expansion Joints, Finish Rubbing, and Roadway Repair. Complete-In-Place.	LF	50		
03 30 00h	<b>Installation of Detectable Warning Pad</b> , Including Warning Pad, Installation, Expansion Joints, Finish Rubbing, and Site Restoration, Complete-In-Place	EA	20		
<b>31 20 00</b>	<b>Earthwork</b>				
31 20 00a	<b>Clearing and Grubbing</b> , for Installation of Concrete Multi-Use Trail, Including Stripping Topsoil and Stockpiling, Hedge, Brush and Tree Removal and Disposal	LS	1		
31 20 00b	<b>Unclassified Demolition/Excavation</b> , of Existing Roadway, Curbs, Sidewalks, Brick, and Debris Required to Prepare Sidewalk Subgrade, Including Saw-Cutting, Removal and Disposal of Spoil, Cuts and Fills Where Necessary, and Ditch Grading	LS	1		
31 20 00c	<b>Demolition, Removal, and Disposal of Existing Storm Structures</b> , Including Concrete Headwalls and Pipe Culverts	LS	1		
31 20 00d	<b>Schedule I Site Grading Complete</b> , Including Elevation Control, Site Layout, Construction Staking, Cut Excavation and Fill Dirt Placement to Subgrades, Subgrade Preparation, and Fine Grading to Finish Grades as Shown on Drawings.	LS	1		
31 20 00e	<b>Compacted Fill Dirt</b> , Including Hauling, Placing, and Compacting Approved Fill Dirt Material in Areas Shown on Plan and Profile Drawings as Needed and as Directed by Engineer	CY	900		
31 20 00f	<b>Crushed Stone Backfill</b> , in Trench for 60-Inch CPP, 30-Inch, 24-Inch, and 18-Inch Reinforced Concrete Pipe (RCP), 0-6 feet deep, below Concrete Trail from Top of Bedding to Trail Bedding	Tons	150		

Item No.	Description	Unit	Est. No. of Units	Unit Price	Item Total
31 20 00g	<b>Crushed Stone Bedding Material</b> , in Excess of that Required for Standard Bedding and Haunching, Where Unsuitable Soil is Encountered or Where Additional Material for Bedding or Grading is Required or as Directed by the Engineer, <b>Including Undercut Excavation, Disposal, and Stone Placement</b>	CY	250		
31 20 00h	<b>Compacted Crushed Base Stone (GAB) for Asphalt and Concrete Pavement Repair Areas</b> , Including Stone Placement, Compaction, and Fine Grading for Roads, Parking Lots, Driveways, and Transitions to Existing Driveways	Tons	40		
31 20 00i	<b>Trench Rock Excavation</b> by Drill & Blast, Rock Trenching, or Hoe-ramming Methods, Including Hauling and Proper Disposal of Spoil Materials	LF	50		
31 20 00j	<b>Sifted Topsoil</b> (Purchased and Imported to Project Site) as Approved by Engineer, Not Including On-site Soil	CY	450		
31 20 00j	<b>Final Grading and Cleanup</b> of areas outside Sidewalks, Driveways, Parking Lots, and Roads <b>(On Both Sides)</b> , Including Topsoil Placement and Grading (Not Including Grassing and Mulch)	LF	4,650		
31 20 00k	<b>Remove and Replace Existing 6-Foot Chain-Link Fence</b> to Match Existing Fence Line	LF	290		
<b>31 25 00</b>	<b>Slope Protection and Erosion Control</b>				
31 25 00a	<b>Temporary Silt Fence (Sd1-NS); Type Non-Sensitive Silt Fence</b> , Including Trenching, Installation, Posts, Filter Fabric, Woven Wire Fence Backing, Tie Wire, Bracing, and Maintenance and Removal	LF	3,150		
31 25 00b	<b>6" - 12" Type 3 Riprap Stone (Rp)</b> , Complete-in-Place where shown on Plans for Outlet Protection, Channel Protection, and Check Dams as Directed by the Engineer and Includes Excavation and Filter Fabric Installation	Tons	80		
31 25 00c	<b>Vegetated Channel Lining (Ch-V)</b> , Complete-in-Place where shown on Plans for Channel Stabilization as Directed by the Engineer	SF	6,000		
31 25 00e	<b>Inlet Sediment Trap (Sd2)</b> , For Inlet Protection Including Installation, Maintenance, and Removal	EA	1		
31 25 00f	<b>Construction Entrance (CO)</b> , Including Stone and Geotextile Filter Fabric	EA	1		
31 25 00g	<b>Concrete Washout Structure (CW)</b> , Including Installation, Maintenance, and Removal	EA	1		

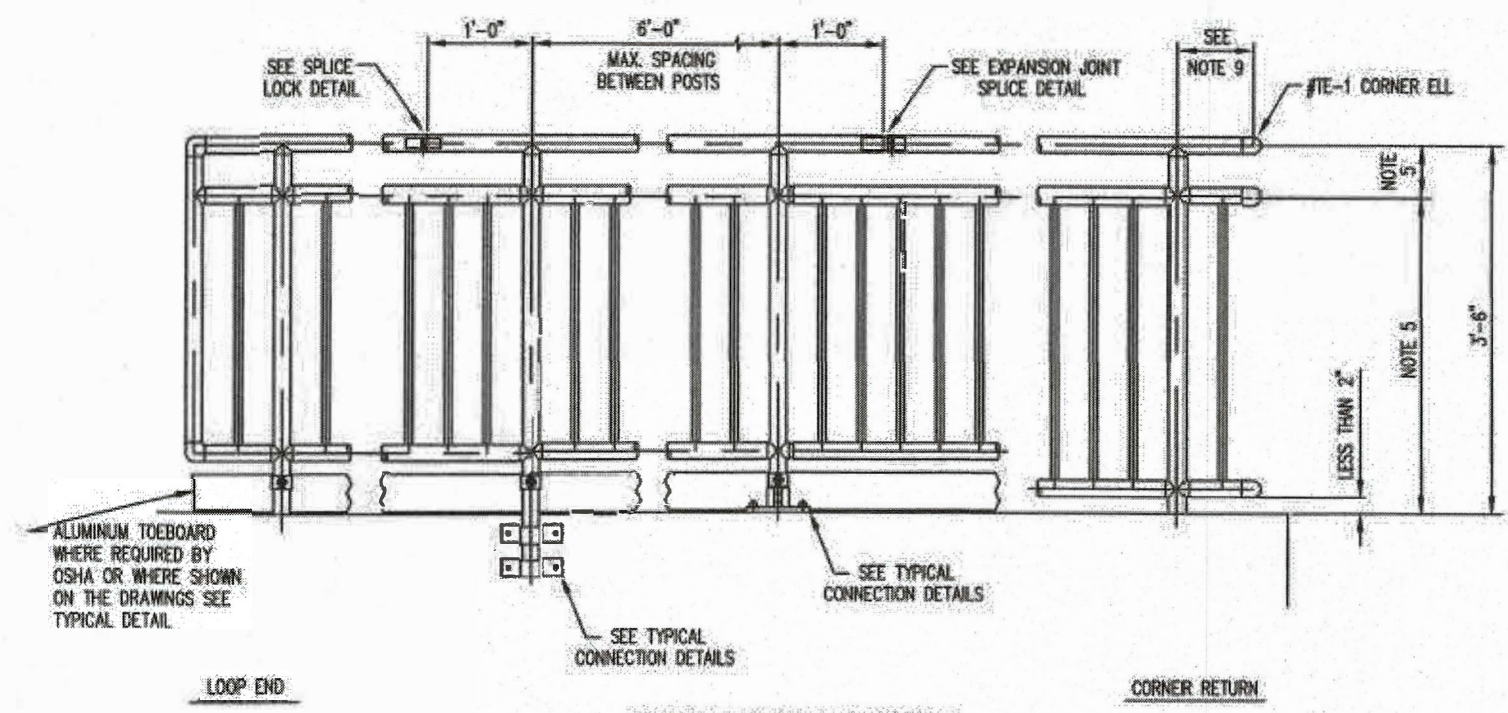
Item No.	Description	Unit	Est. No. of Units	Unit Price	Item Total
<b>32 10 00</b>	<b>New and Replacement Paving</b>				
32 10 00a	<b>Heavy Duty Asphalt Pavement Replacement for Driveways, Trench Width,</b> with 2" of 9.5mm GDOT mix, Including Saw-Cutting	Tons	20		
<b>32 92 19</b>	<b>Seeding and Mulching</b>				
32 92 19a	<b>Temporary Mulching (Ds1)</b>	LF	2,000		
32 92 19b	<b>Temporary Seeding and Mulching (Ds2)</b>	LF	4,650		
32 92 19c	<b>Permanent Seeding And Mulch (Ds3),</b> Including Topsoil Placement, Seed Fertilizer, Limestone, and Mulch	LF	4,650		
<b>33 12 13</b>	<b>Water Service Metering</b>				
33 12 13a	<b>Adjust or Move Water Service Meters and Boxes,</b> for Trail Grading and Installation, Including Excavation, All Material Required for Relocation of Meter and Box, Stone Bedding, and Site Restoration	EA	19		
33 12 13b	<b>Adjust Sewer Manholes, Water Valves, or Gas Valve Covers,</b> Including Excavation, Valve Cover Materials and Coordination with Utility Owner	EA	4		
33 12 13c	<b>Remove, Adjust, or Relocate Existing Fire Hydrant or Water Vault,</b> Including Excavation, Pipe and Fitting Materials, Stone Bedding and Backfill. (Contractor Shall Coordinate with Water Utility)	EA	2		
<b>33 40 00</b>	<b>Storm Sewerage</b>				
33 40 00a-1	<b>Dual 60-Inch Corrugated Plastic Pipe (CPP) Drainage Crossing at Station 1+70,</b> Complete in Place, Including Excavation, Disposal of Soil and Debris, Bedding and Backfill, Grading, <b>Concrete Headwalls,</b> Handrail, and Site Restoration (Cast-In-Place Concrete for Trail Paid Separately)	EA	1		
33 40 00a-2	<b>Dual 60-Inch Corrugated Plastic Pipe (CPP) Drainage Crossing at Station 23+25,</b> Complete in Place, Including Excavation, Disposal of Soil and Debris, Bedding and Backfill, Grading, <b>Concrete Headwalls,</b> Handrail, and Site Restoration (Cast-In-Place Concrete for Trail Paid Separately)	EA	1		
33 40 00b-1	<b>24-Inch Reinforced Concrete Pipe (RCP),</b> Including Excavation, Disposal of Soil and Debris, Bedding, Complete-In-Place (Crushed Stone Backfill Paid Separately)	LF	40		
33 40 00b-2	<b>18-Inch Reinforced Concrete Pipe (RCP),</b> Including Excavation, Disposal of Soil and Debris, Bedding, Complete-In-Place (Crushed Stone Backfill Paid Separately)	LF	20		

Item No.	Description	Unit	Est. No. of Units	Unit Price	Item Total
33 40 00c	<b>Cut-In Drop Inlet (GDOT Standard 1019A, Type E) on Existing 30-Inch Reinforced Concrete Pipe (RCP)</b> , Including Saw-Cutting Asphalt Pavement, Excavation, Disposal of Soil and Debris, Bedding and Backfill, Replacement of Asphalt Pavement Surface as Required, Complete-In-Place	EA	1		
33 40 00d	<b>Junction Box (GDOT Standard 9031U, Type E) on Existing 18-Inch Reinforced Concrete Pipe (RCP)</b> , Including Saw-Cutting Asphalt Pavement, Excavation, Disposal of Soil and Debris, Bedding and Backfill, Connection to Existing Dual 12-Inch Corrugated Metal Pipes (CMP), Complete-In-Place	EA	1		
33 40 00e	<b>12-Inch Trench Drain</b> , Including Excavation, 2-Inch Stone Bedding, Concrete Channel and Rebar, Cast Iron Frame and Grate, and Site Restoration	LF	22		
33 40 00f-1	<b>Concrete Headwall (GDOT Standard 1001-B) for 30-Inch Culvert</b> , Including Excavation, 2-Inch Bedding Stone, Form Work, Expansion Joints, Finish Rubbing, and Site Restoration, Complete-In-Place	CY	1		
33 40 00f-2	<b>Concrete Headwall (GDOT Standard 1001-B) for 24-Inch Culvert</b> , Including Excavation, 2-Inch Bedding Stone, Form Work, Expansion Joints, Finish Rubbing, and Site Restoration, Complete-In-Place	CY	1		
<b>34 00 00</b>	<b>Signs, Striping, and Signalization</b>				
34 00 00a	<b>White Thermoplastic Solid Traffic Stripe for Crosswalks (GDOT Standard T-11A)</b>	LF	570		
34 00 00b	<b>24-Inch White Thermoplastic Solid Traffic Stripe for Stop Bars (GDOT Standard T-11A)</b>	LF	30		
34 00 00c-1	<b>White Thermoplastic Solid Pavement Marking Word "Ahead" (GDOT Standard T-13A, Type 4)</b>	EA	2		
34 00 00c-2	<b>White Thermoplastic Solid Pavement Marking Word "Slow" (GDOT Standard T-13A, Type 5)</b>	EA	2		
34 00 00d	<b>Standard W16-1P "Share The Road" MUTCD Sign</b> , Including Sign Plate, Framing, and Post Installation, Complete-In-Place	EA	2		
34 00 00e	<b>Relocate Existing Road Sign</b> , Complete-In-Place	EA	5		
34 00 00f	<b>Relocate Existing Mailbox</b> , Complete-In-Place	EA	5		
<b>TOTAL SCHEDULE I - BASE BID</b>				<b>\$</b>	<b>-</b>



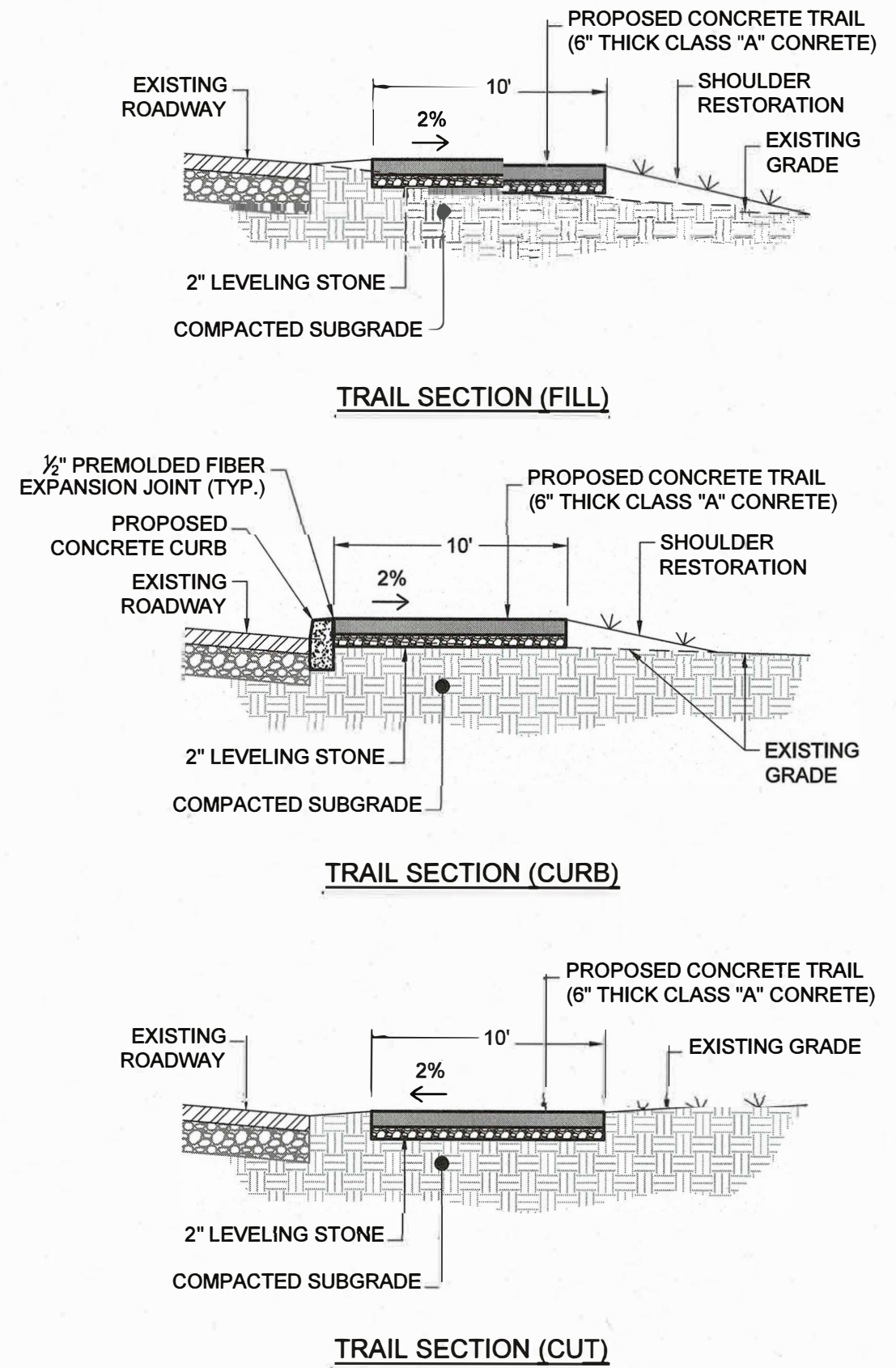
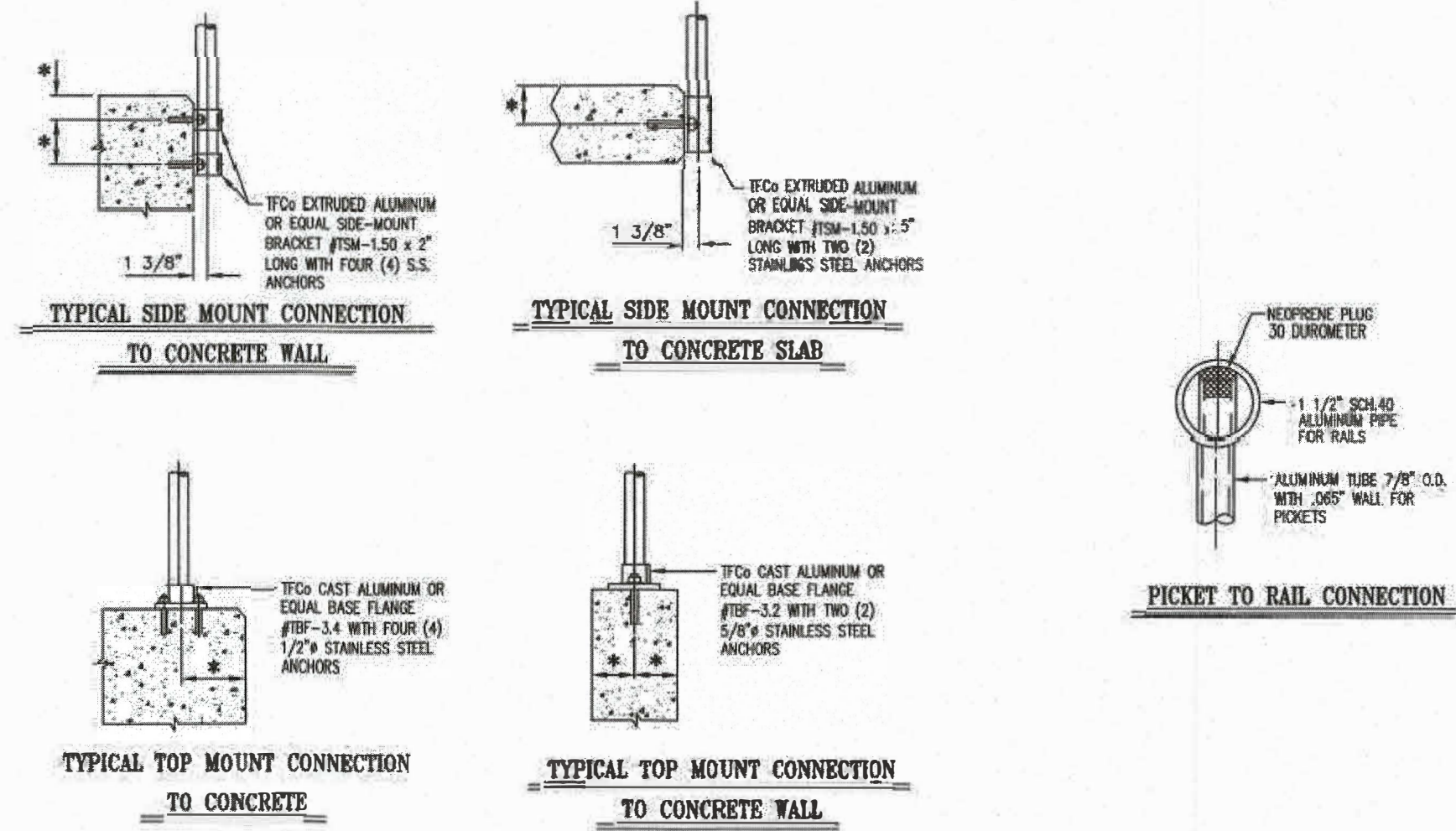
Item No.	Description	Unit	Est. No. of Units	Unit Price	Item Total
<p><b>Notes:</b></p> <p>1. Contractor shall Bid on all Schedules.</p> <p>2. The Owner may award any combination of Schedules. Contract will be awarded (if it is awarded) to the responsible and responsive Bidder submitting the lowest Bid sum in the selected combination of Schedules.</p> <p>3. Some schedules may not be awarded.</p> <p>4. Contractor certifies that he has reviewed the Drawings and Specifications and that all work not specifically listed in the Bid Schedule is included in the prices for various items listed in the Bid Schedule.</p>					
BIDDER			DATE		
BY		(Signature)		TITLE	
ADDRESS					
CITY		STATE		ZIP CODE	
PHONE		FAX		E-MAIL	





**TYPE I HANDRAIL NOTES**

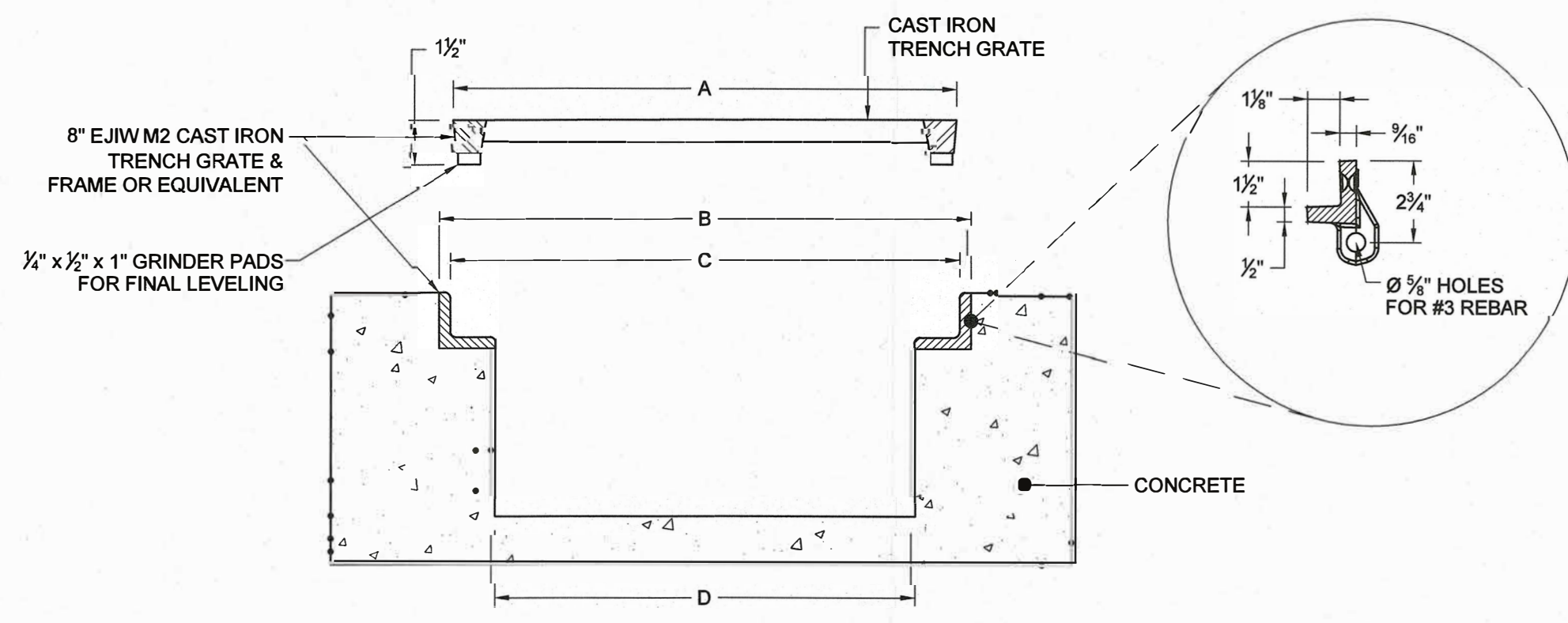
- Handrails shall be the product of a company normally engaged in the manufacture of pipe railing. Railing shall be shop assembled in lengths not to exceed 24 feet for field erection.
  - The handrail shall be made of pipes joined together with component fittings. Samples of all components, bases, toe plate and pipe shall be submitted for approval at the request of the engineer. Components that are pop-riveted or glued at the joints will not be acceptable. All components must be mechanically fastened with stainless steel hardware. Handrail and components shall be TUFlex, as manufactured by Thompson Fabricating, LLC (Birmingham, Alabama) or an approved equal.
  - Railings shall be 1 1/2" Schedule 40 aluminum pipe alloy 6105-T5, ASTM-B-429 or ASTM-B-221. Posts shall be 1 1/2" Schedule 80 aluminum pipe of the same alloy. Post spacing shall be a maximum of 6'-0".
  - Handrails shall be designed to withstand a 200 lb concentrated load applied in any direction and at any point on the top rail. Handrails shall also be designed to withstand a uniform load of 50 lb/ft applied horizontally to the top rail. Uniform loads are not to be applied simultaneously with the concentrated loads.
  - Pickets and intermediate railings shall be provided such that a 4-inch diameter sphere cannot pass through any opening up to a height of 34 inches. From a height of 34 inches to 42 inches above the adjacent walking surface, a sphere 8 inches in diameter shall not pass. The triangular openings formed by the riser, tread and bottom rail at the open side of a stairway shall be of a size such that a sphere of 6 inches in diameter cannot pass through the opening.
  - Pickets and intermediate railings shall be designed to withstand a horizontally applied normal load of 50 lb on an area not to exceed one square foot including openings and space between rails.
  - The manufacturer shall submit calculations for approval at the request of the Engineer. Testing of base coatings or base extrusions by an independent lab or manufacturer's lab (if manufacturer's lab meets the requirements of the Aluminum Association) will be an acceptable substitute for calculations. Calculations will be required for approval of all other design aspects.
  - Posts shall not interrupt the continuation of the top rail at any point along the railing, including corners and end terminations (OSHA 1910.23). The top surface of the top railing shall be smooth and shall not be interrupted by projected fittings.
  - The mid-rail at a corner return shall be able to withstand a 200 lb load without loosening. The manufacturer is to determine this dimension for their system and provide physical laboratory tests to confirm compliance.
  - Concrete anchors shall be stainless steel type 303 or 304 and shall be furnished by the handrail manufacturer. The epoxy (see specs) anchor design shall include the appropriate reduction factors for spacing and edge distances in accordance with the manufacturer's published data.
  - Toe plates shall conform to OSHA standards. Toe plate shall be a minimum of 4" high and shall be an extrusion that attaches to the posts with clamps that will allow for expansion and contraction between posts. Toe plates shall be set 1/4" above the walking surface. Toe plates shall be provided on handrails as required by OSHA and/or as shown on drawings. Toe plates shall be shipped loose in stock lengths for field installation.
  - Openings in the railing shall be guarded by a self-closing gate (OSHA 1910.23). Safety chains shall not be used unless specifically shown on the drawings.
  - Finish shall be Aluminum Association M10-C22-A41 (215-R1). The pipe shall be plastic-wrapped. The plastic wrap is to be removed after erection.
  - Aluminum surfaces in contact with concrete, grout or dissimilar metals will be protected with a coat of bituminous paint, mylar isolators or other approved material.
- \* Concrete anchor diameter, edge distances, embedment, as well as post spacings, to be determined upon anchor selection.



**TRAIL SECTION NOTES:**

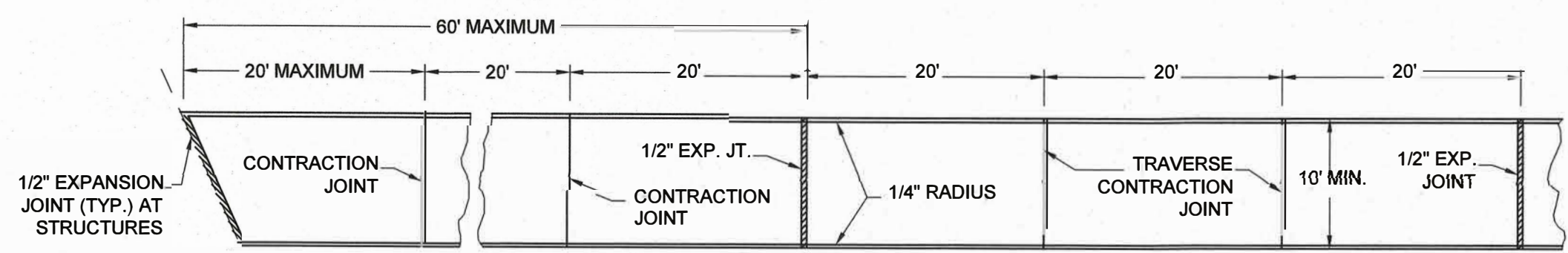
- A MAJORITY OF THE EXISTING GRAVEL TRAIL IS AT GRADE AND WILL REQUIRE REMOVAL OF EXISTING GRAVEL/SOIL TO PREPARE SUBGRADE FOR NEW CONCRETE.
- CROSS SLOPE CAN BE REVERSED IF NEEDED TO PROVIDE POSITIVE DRAINAGE AND MATCH EXISTING CONDITIONS.

**TYPICAL TRAIL SECTIONS**  
NOT TO SCALE



A	B	C	D
STANDARD	STANDARD	STANDARD	STANDARD
12"	12 5/8"	12 5/8"	10 5/8"

**TRENCH DRAIN GRATE SECTION**  
NOT TO SCALE



**CONCRETE MULTI-USE TRAIL NOTES:**

- CLASS "A" (4,000 PSI) CONCRETE TO BE PLACED 6" THICK AND FINISHED IN ACCORDANCE WITH THE SPECIFICATIONS.
- TRANSVERSE CONTRACTION JOINTS SHALL BE PLACED AT 20 FT INTERVALS. ALL EDGES TO BE ROUNDED TO 1/4" RADIUS.
- 1/2" EXPANSION JOINTS TO BE PLACED, WHERE SIDEWALK TIES INTO A STRUCTURE OR TERMINATES AT CURB, RAMPS OR DRIVEWAYS AND AT 60' INTERVALS.
- TOOLED JOINTS SHALL BE PLACED AT 10 FT INTERVALS.

**TYPICAL TRAIL DETAIL**  
NOT TO SCALE

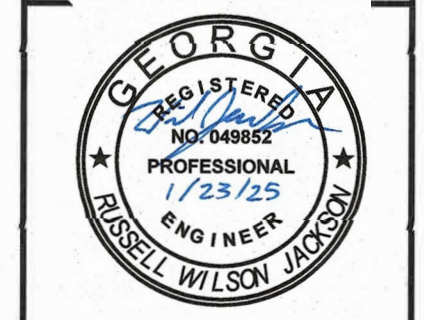
THIS DRAWING IS AN INSTRUMENT OF SERVICE FOR THE PROJECT IDENTIFIED HEREIN. IT IS THE PROPERTY OF CTI ENGINEERS, INC. AND SHALL BE KEPT IN CONFIDENCE. IT IS TO BE USED ONLY FOR THE PROJECT AND COMMON LAW RIGHTS, INCLUDING COPYRIGHTS. THIS DRAWING SHALL NOT BE REPRODUCED, COPIED, OR DISTRIBUTED TO OTHERS IN ANY FORM OR USED FOR ANY OTHER PURPOSE OR PROJECT WITHOUT PRIOR WRITTEN CONSENT OF CTI. CTI IS NOT RESPONSIBLE FOR CONSEQUENCES RELATED TO UNAUTHORIZED USE OR REUSE OF THIS DRAWING OR PORTIONS THEREOF.

REVISIONS	NO.	DESCRIPTIONS	DATE	BY	APPD
	01	ADDN DIM 1	01/25	RWJ	RWJ

DESIGN: RWJ  
DRAWN: RWJ  
CHECKED: PRS  
APPROVED: RWJ

TRUST FOR PUBLIC LAND  
BATTLEFIELD CONNECTOR MULTI-USE TRAIL  
STANDARD DETAILS

**CTI ENGINEERS**  
1122 RIVERFRONT PARKWAY  
CHATTANOOGA, TN 37402  
423-267-7613



GSWCC 96542  
JOB NO.: G23012-01  
ISSUE DATE: 01/08/2025  
DRAWING NO.: C-401.01