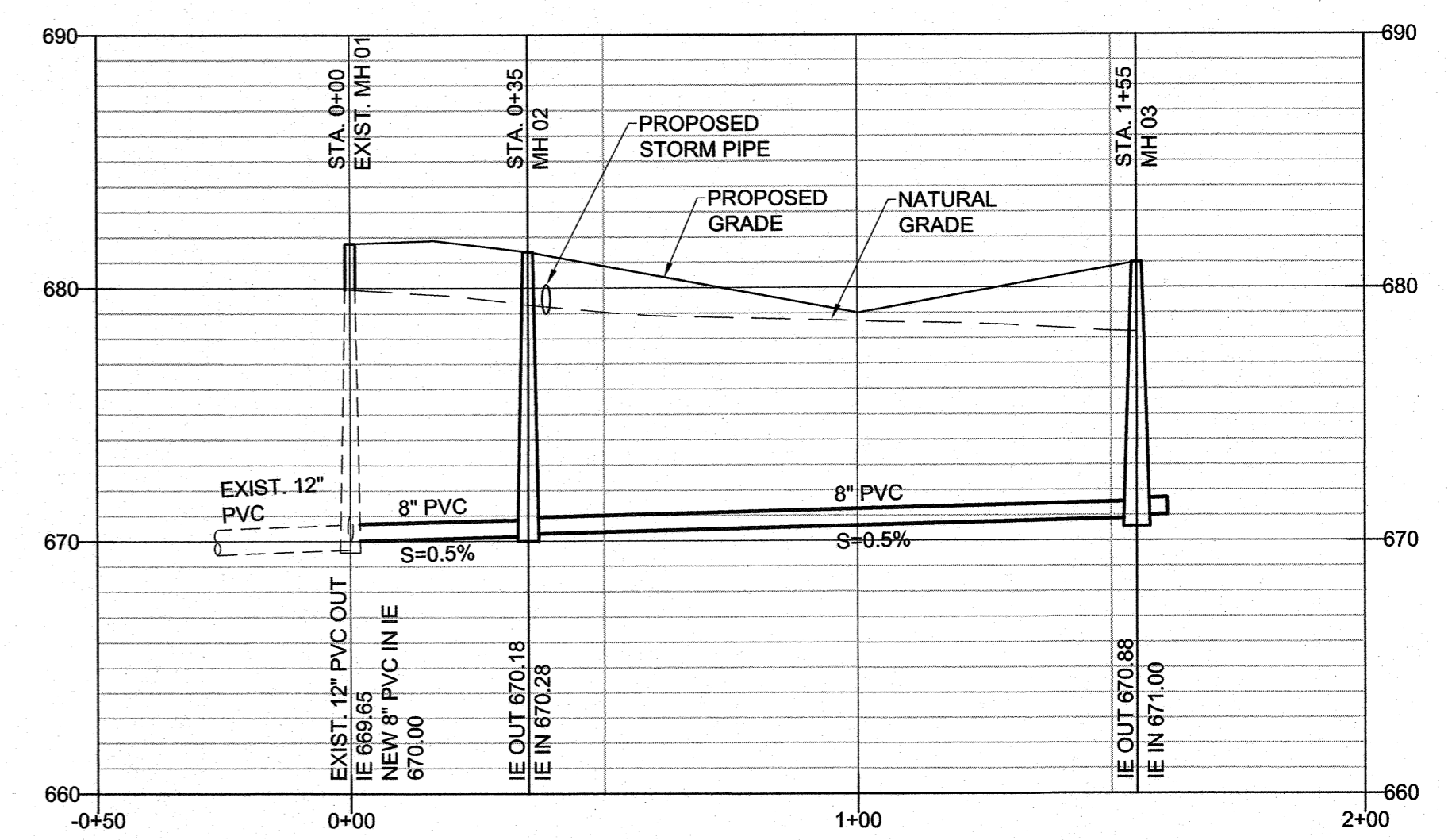
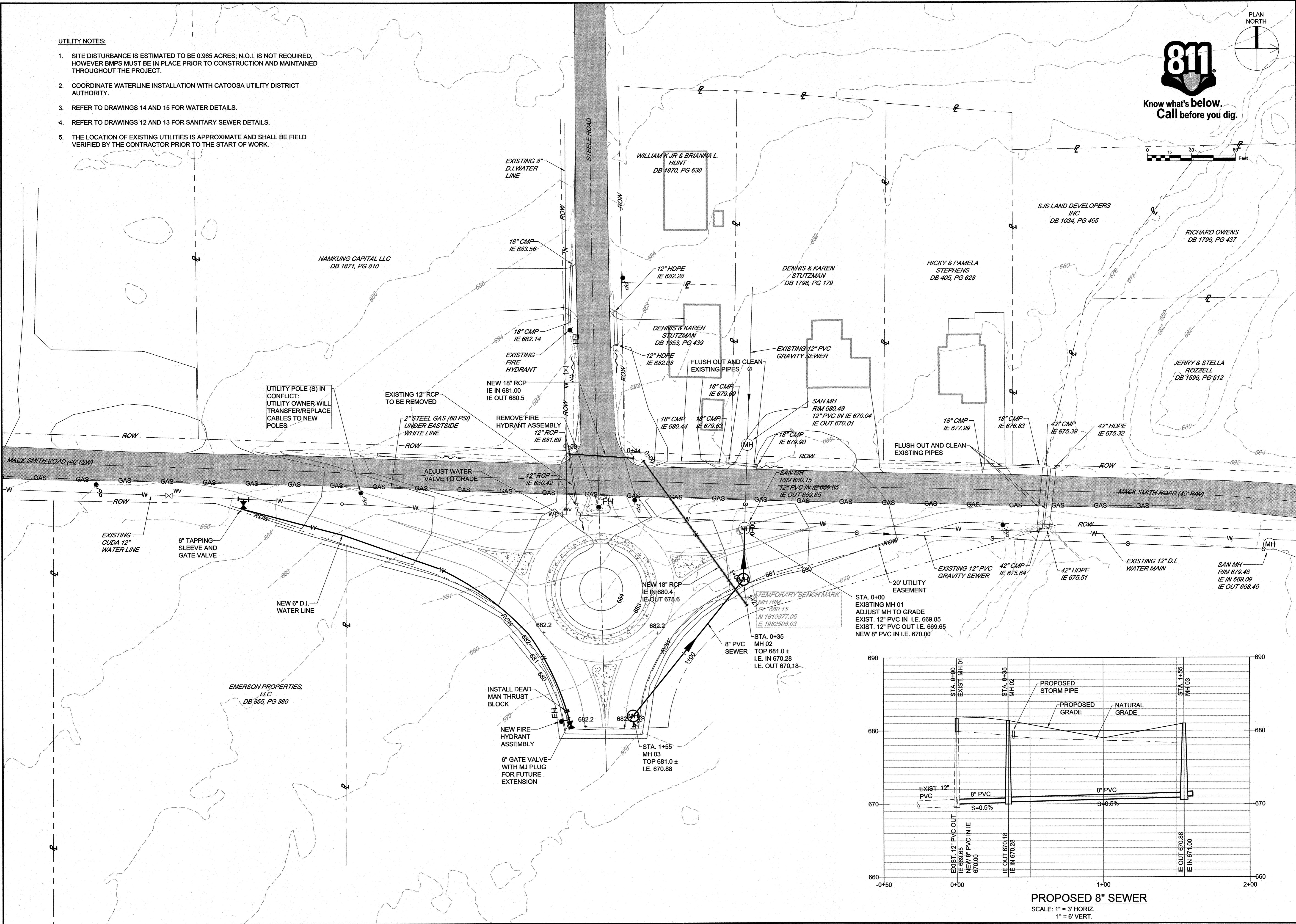
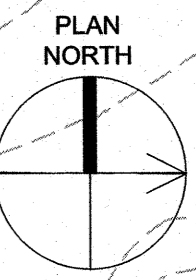


**UTILITY NOTES:**

1. SITE DISTURBANCE IS ESTIMATED TO BE 0.965 ACRES; N.O.I. IS NOT REQUIRED, HOWEVER BMPs MUST BE IN PLACE PRIOR TO CONSTRUCTION AND MAINTAINED THROUGHOUT THE PROJECT.
2. COORDINATE WATERLINE INSTALLATION WITH CATOOSA UTILITY DISTRICT AUTHORITY.
3. REFER TO DRAWINGS 14 AND 15 FOR WATER DETAILS.
4. REFER TO DRAWINGS 12 AND 13 FOR SANITARY SEWER DETAILS.
5. THE LOCATION OF EXISTING UTILITIES IS APPROXIMATE AND SHALL BE FIELD VERIFIED BY THE CONTRACTOR PRIOR TO THE START OF WORK.



Know what's below.  
Call before you dig.



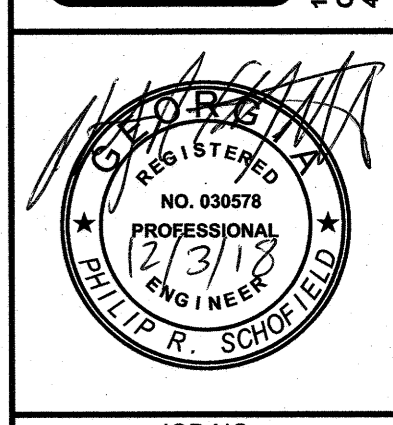
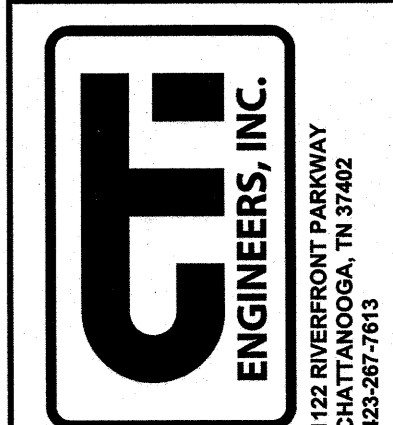
**PROPOSED 8" SEWER**  
SCALE: 1" = 3' HORIZ.  
1" = 6' VERT.

THIS DRAWING IS AN INSTRUMENT OF SERVICE OWNED BY CTI ENGINEERS, INC. (CTI), WHICH SHALL BE KEPT IN ALL ORIGINAL AND COMMON LAW RIGHTS, INCLUDING COPYRIGHTS. THIS DRAWING SHALL NOT BE SCANNED, COPIED, OR DISTRIBUTED TO OTHERS IN ANY FORM OR FOR ANY OTHER PURPOSE OR PROJECT WITHOUT PRIOR WRITTEN CONSENT OF CTI. CTI IS NOT RESPONSIBLE FOR CONSEQUENCES RELATED TO UNAUTHORIZED USE OR REUSE OF THIS DRAWING OR PORTIONS THEREOF.

NO.	DESIGN	DESCRIPTIONS	DATE	BY	APPD
1	PR	REVISED SEWER PROFILE	10/18	JRB	PRS
2	DR	ADDED DEAD MAN & VALVE	11/18	MAB	PRS

**CITY OF FORT OGLETHORPE, GEORGIA**  
**MACK SMITH ROAD TRAFFIC CIRCLE**

UTILITY PLAN



JOB NO. G18029
ISSUE DATE 09/03/2018
SCALE AS NOTED
DRAWING NO. 10.2